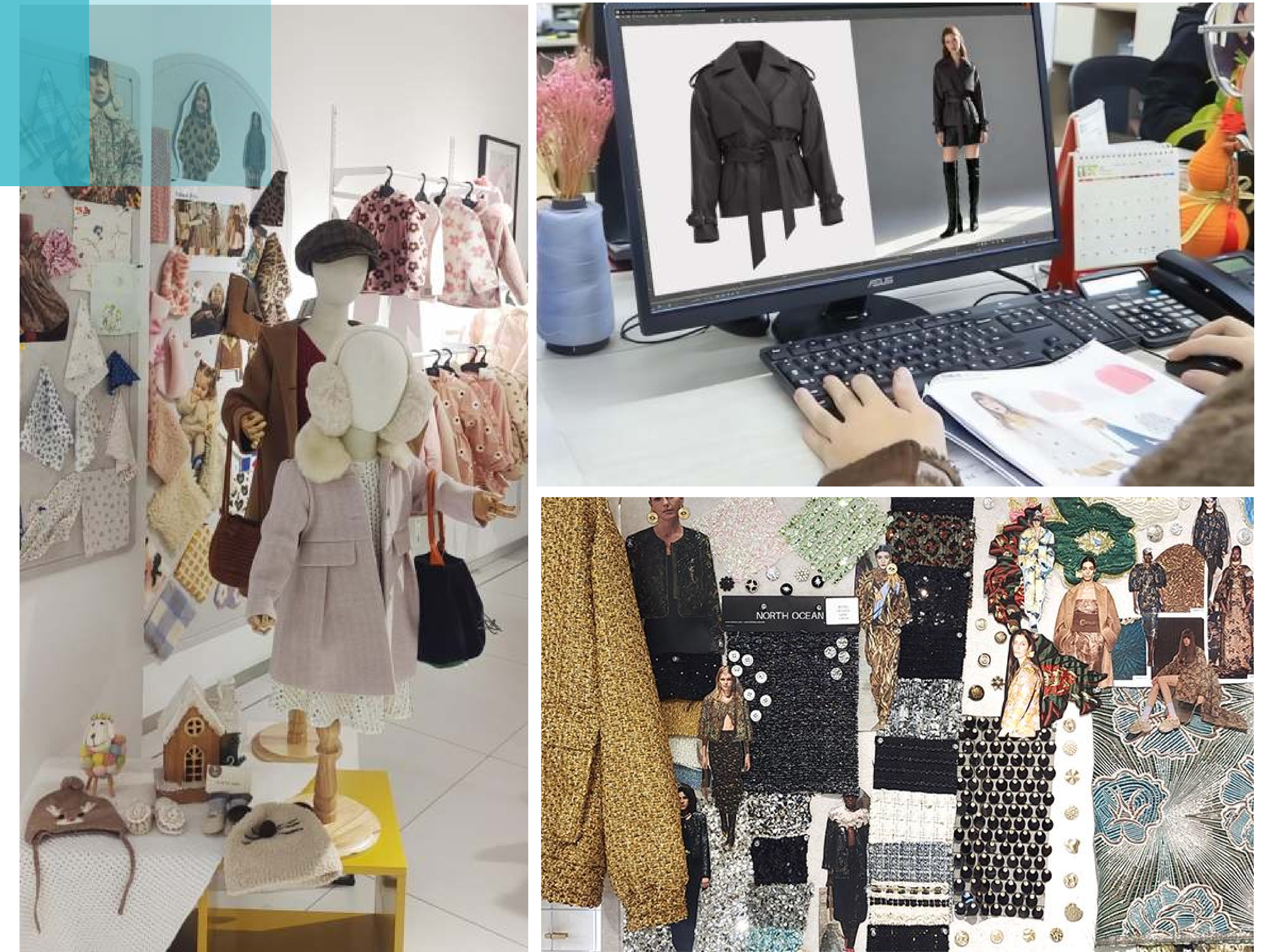


BETTEX

YOUR GLOBAL FASHION PARTNER

Founded in 1999, BETTEX is one of the largest players of global fashion solution providers, with research and development centers in London, New York, A Coruña, Bologna, Mexico, Dhaka, Gurugram and Tokyo. BETTEX has state-of-the-art factories in China, Bangladesh, and India. Our products consist of woven outerwear, loungewear, knitwear, swimwear, activewear, outerwear and more. We serve as a long-term partner of international mainstream fashion brands across Europe, America, Japan and Oceania. BETTEX is dedicated to providing innovative, sustainable and organic fashion solutions. We believe strongly in humanity & collaboration across all global business partners.

BETTEX produces in China, Bangladesh, Cambodia and India. Our main products include sweaters, outerwear, loungewear, sportswear, accessories, lingerie, swimwear, formal wear, workwear and many more.





Established
1999



Global Employees
5000+



Global Presence

9 - Countries
15 - Cities



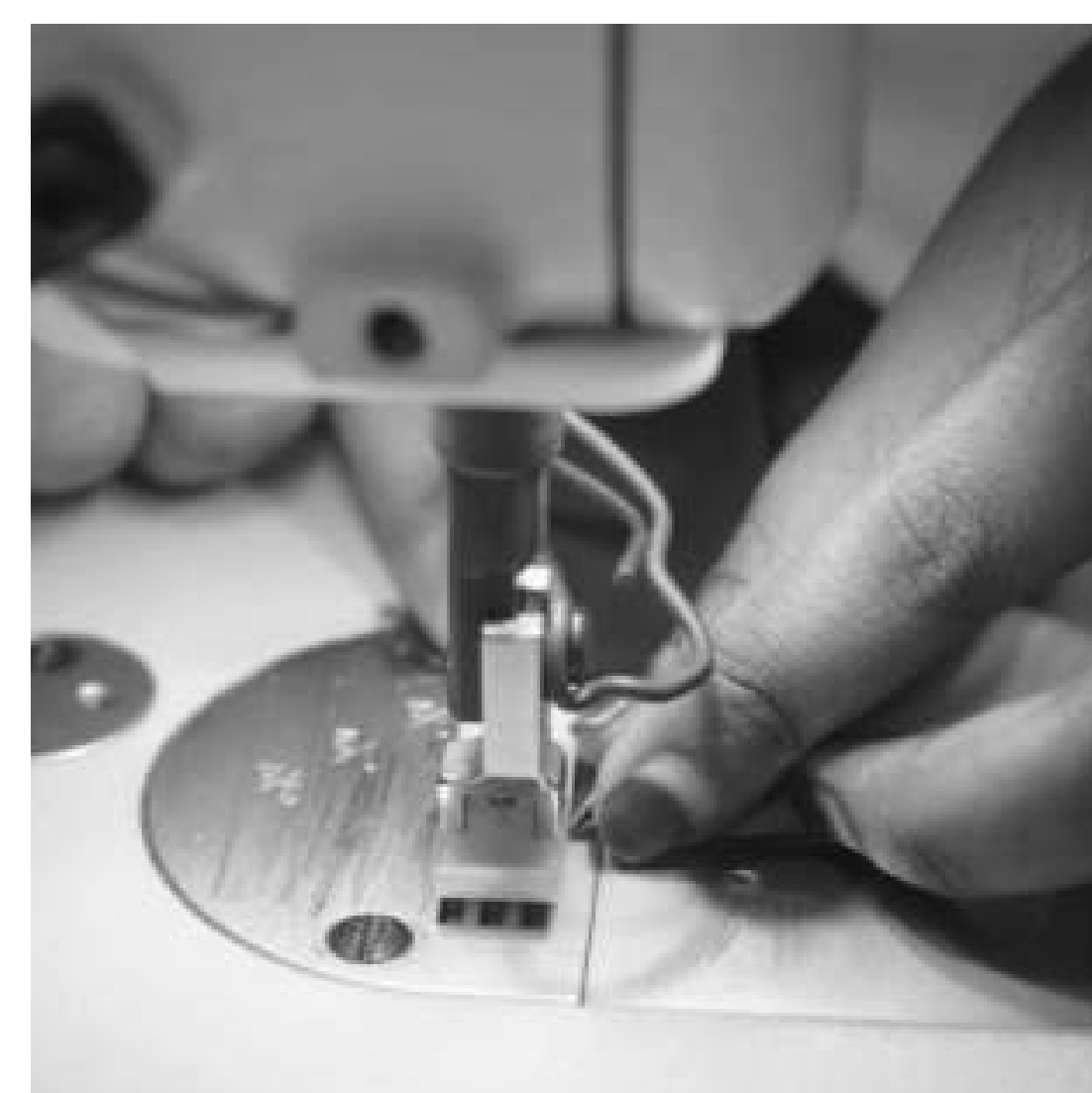
Digital System Matrix

Our digital ecosystem fuses SAP, PLM, and proprietary tools (PLMex, QULEX, TRYEX) to fuel efficient global operations.



Sustainability
& Quality

Focus on eco-friendly & recycled fashion



Manufacturing Unit

China
Bangladesh
India
Cambodia
More...

Categories

- Sweater
- Outerwear
- Swimwear
- Workwear
- Sportswear
- Loungewear
- Dress
- Home Decor
- Pants
- Accessory
- Other apparel



VISION

Lead globally by delivering innovative, technology-driven, and sustainable fashion solution.







MISSION

To be the trusted partner for global fashion brands by providing end-to-end apparel manufacturing and design solutions.



VALUE

-  Trust
 -  Co-Operation
 -  Share
 -  Sustainability
 -  Progress
-

PRIMARK

ZARA

kmart

Sainsbury's

Walmart ✱

Calvin Klein

NEXT

H&M

RiverIsland

TJX

OYSHO

RESERVED

MANGO

STRADIVARIUS

TOMMY HILFIGER

PULL&BEAR

OVS

SKECHERS

C&A

JACK&JONES

BEAUMANOIR

speedo

Itokin

SANMAR

TOYOSHIMA

ONWARD
ONWARD HOLDINGS CO., LTD.

COX

ONLY









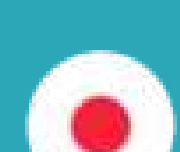

WORKMAN

CHORI

15 Different Cities
From All Over The World

9 Countries



-  UK
-  USA
-  China
-  Italy
-  Mexico
-  Hong Kong (China)
-  Spain
-  Bangladesh
-  Japan
-  India



London, UK



Bologna, Italy



A Coruña, Spain



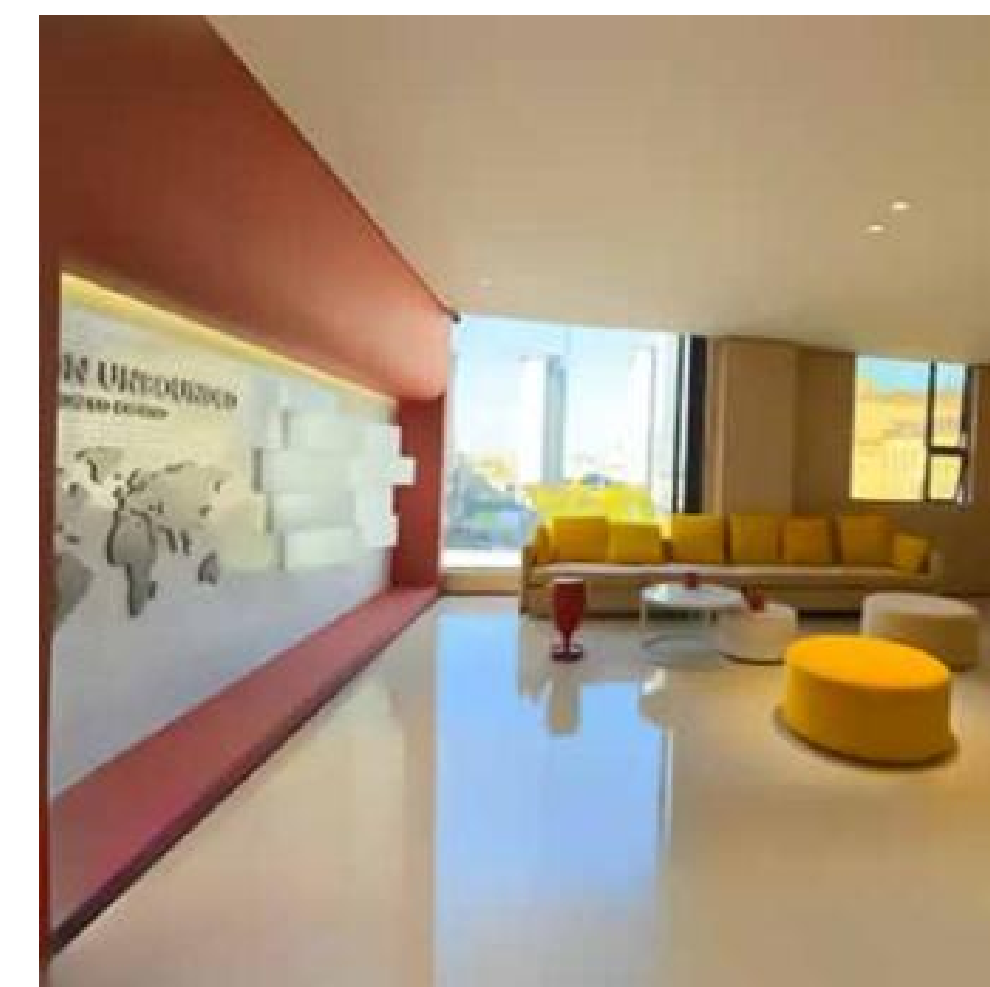
Manhattan, USA



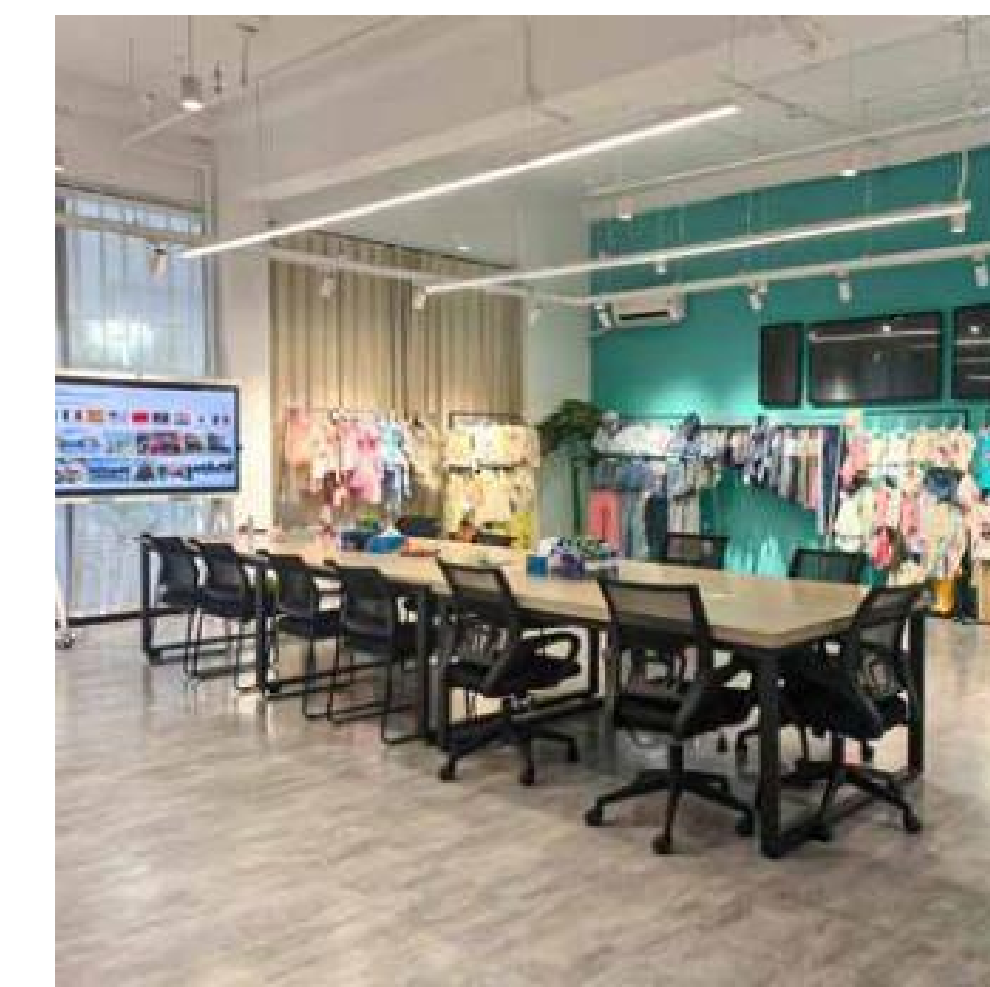
Hong Kong, China



Weihai, China



Xiamen, China



Shanghai, China



Zhangjiagang, China



Qingdao, China



Hangzhou, China



Keqiao, China



Tokyo, Japan



Dhaka, Bangladesh



Haryana, India



London, UK



Bologna, Italy



New York, USA



Tokyo, Japan



Weihai, China



Keqiao, China



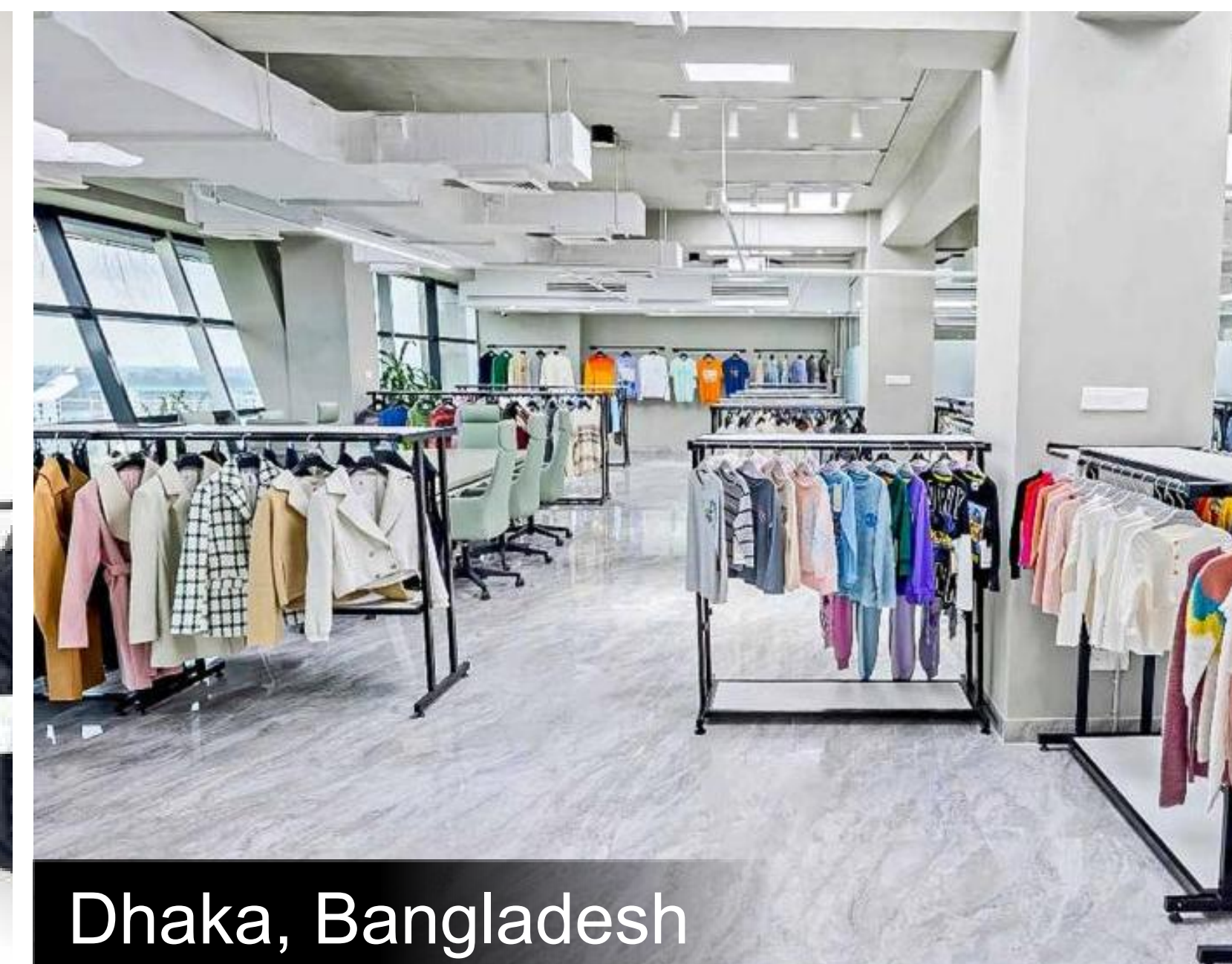
Qingdao, China



Shanghai, China



Hangzhou, China



Dhaka, Bangladesh

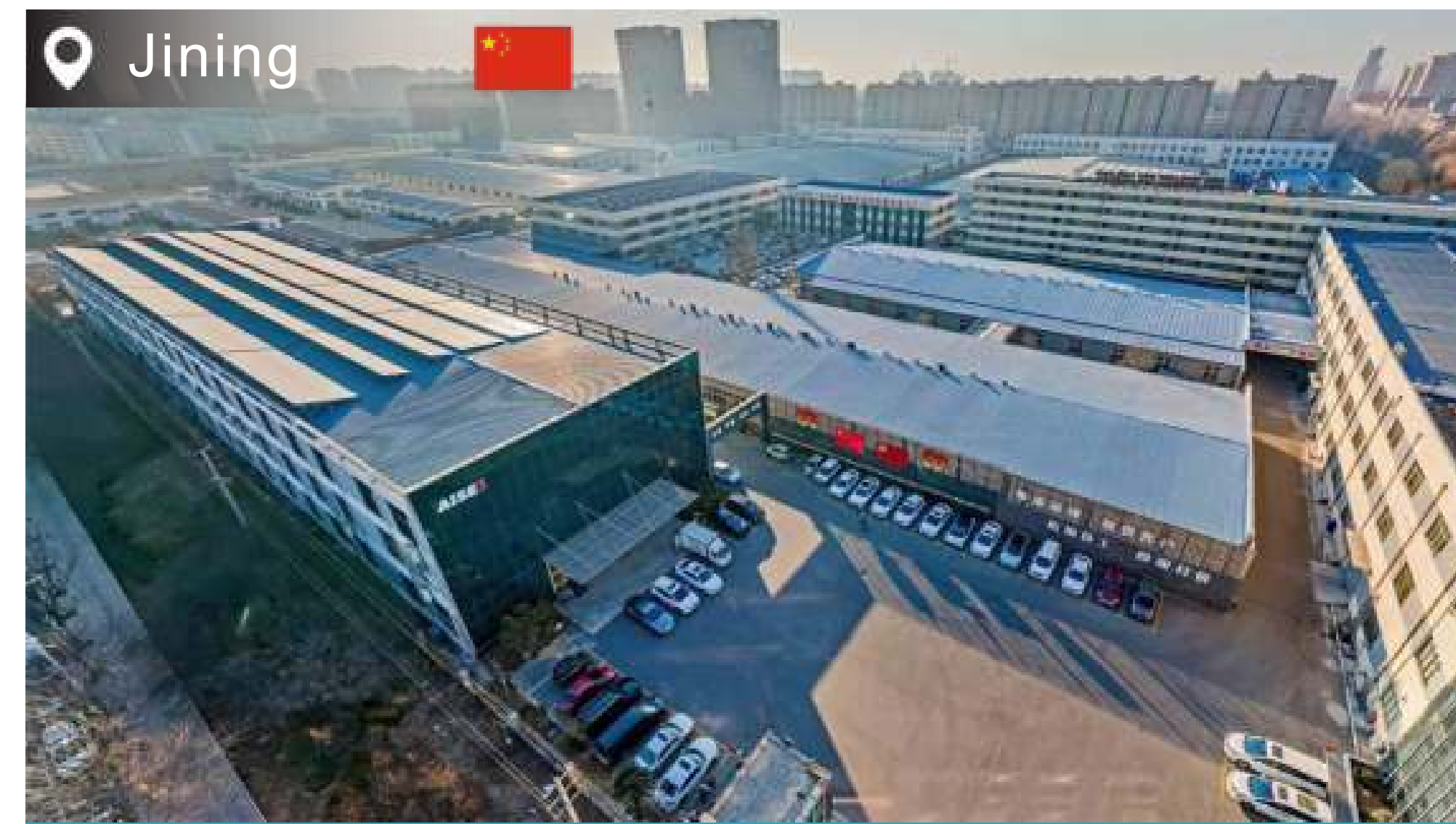


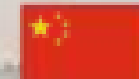
Gurugram, India

We understand that every detail matters when choosing the perfect pieces for your market. That's why we have built a global chain of showrooms, to help bridge the gap between digital presentations and real-world experience of touch and feel.

GLOBAL FACTORIES

We continuously optimize our global industrial chain through wholly owned factories in China, Bangladesh, and Cambodia, backed by long-term strategic partnerships with reputable local suppliers. This hybrid model—combining owned factories with trusted external partners—enables us to flexibly scale capacity, efficiently handle complex orders, and ensure business continuity in changing markets. As a result, we provide reliable, resilient supply assurance for diverse production needs, driving competitiveness and long-term sustainability for our clients.



📍 Jining 

Jining Aisee Garment Co. Ltd.

- Production Capacity Pcs/Month : 300,000
- Total Worker : 1,060
- Production Line : 19



📍 Weihai 

Weihai Goldentex Knitting Co. Ltd.

- Production Capacity Pcs/Month : 256,000
- Total Worker : 300
- Production Line : 2



📍 Yantai 

Yantai Langlang Fashion Co. Ltd.

- Production Capacity Pcs/Month : 492,800
- Total Worker : 330
- Production Line : 4



📍 Gazipur 

BETTEX Industries Ltd.

- Production Capacity Pcs/Month : 350,000
- Total Worker : 1,200



📍 Gazipur 

BETTEX Premium Ltd.

- Production Capacity Pcs/Month : 250,000
- Total Worker : 1,600
- Production Line : 12



📍 Kampong Speu 

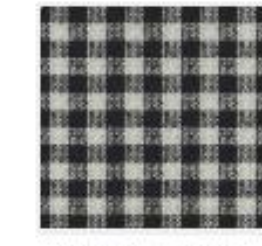
Langlang Fashion (Cambodia) Co. Ltd.

- Production Capacity Pcs/Month : 5,00,000
- Total Worker : 550





WJ-60712



19ME31487



19M50504



MY-19MY563...



XLDSLD2312...



LT-110780



AI+3D — Redefining Fashion Workflow

“AI-Driven 3D Technology That Transforms Creative Concepts into Visual Reality”

We are revolutionizing the fashion design workflow with AI. From instant precision adjustments of styles and patterns to generating dynamic digital try-ons and multi-scenario runway simulations, we turn your creative concepts into visual reality immediately.

Powered by 'Tryex', our proprietary AI platform, we seamlessly integrate cutting-edge industry algorithms with advanced 3D technology. This synergy disrupts traditional sampling models, drastically shortening development cycles and delivering an efficient, immersive visual experience.











BETTEX

CONTACT US

🌐 www.bettex.com

✉ bettex@bettex.com

🌐 www.linkedin.com/company/bettex

📷 www.instagram.com/bettexltd

📘 www.facebook.com/bettexltd

