

BETTTEX

Your Global Fashion Partner

GLOBAL
ATTIRE LTD.
FACTORY PROFILE



We are GLOBAL ATTIRE LTD.

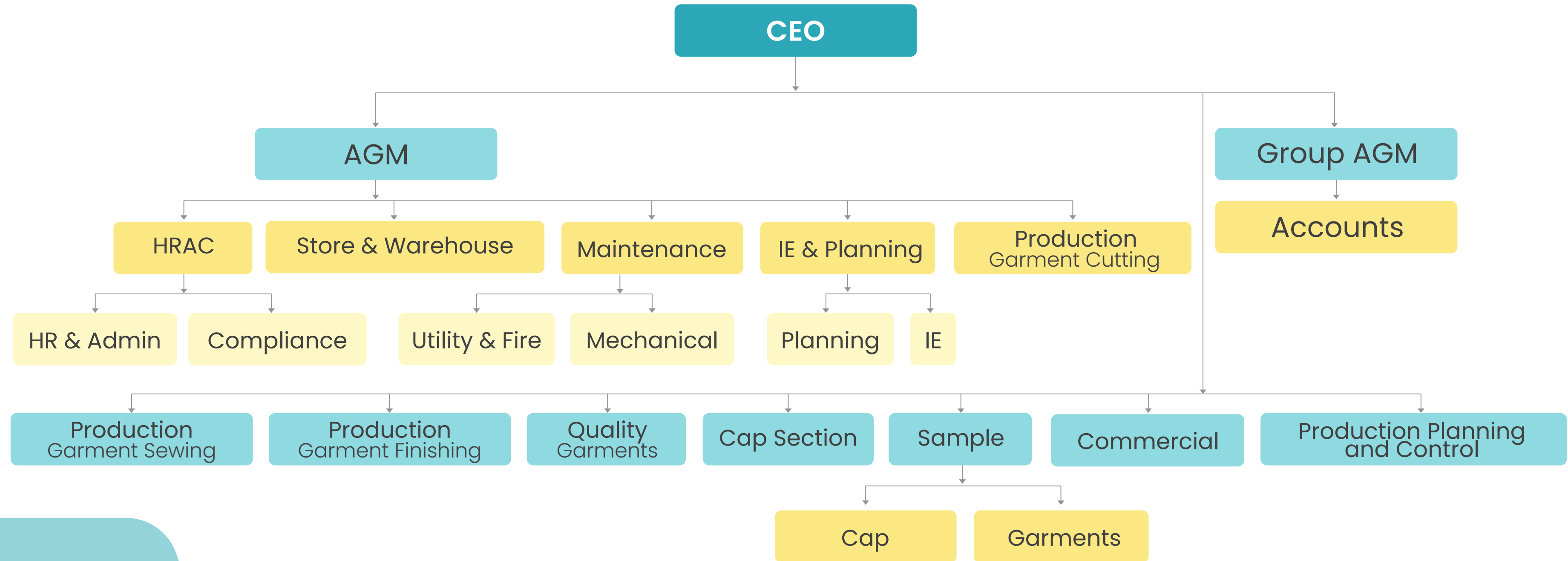
Founded in 2012, Global Attire Limited delivers a diverse range of products specializing in advanced headwear production. Annually, we produce 5 million garments across 16 production lines and 12 million pieces of headwear through 30 dedicated lines—driven by passion, precision, and a highly skilled team serving both local and international markets. We manufacture a broad spectrum of garments at our 6-stories facility in Ashulia, Bangladesh.



Overview

Employees	2,000 +
Total Area	3,79,137 ft ²
Production Capacity (garments)	5 million pcs / year
Production Capacity (headwear)	12 million pcs / year
Production Line (garments)	16 lines
Production Line (headwear)	30 lines
Machines	1,750+
Training Provided	40+ / month
Product Category	Headwear, Jacket, Woven Bottoms, Swimwear, Workwear, Loungewear
Export Market	Europe, USA, Canada, Australia & South Korea

Organogram





List of Machines

• Auto Lock Stitch Machine	797	• High & Half Stitch Machine	103
• Double Needle Machine	126	• JIK Pattern Machine	01
• Overlock Machine	125	• Snap Button Machine	44
• Side Cutter Vertical Machine	31	• Iron Table	106
• Bartack Machine	117	• Embroidery Machine	10
• Button Stitch Machine	16	• Metal Detector Machine	05
• Chain Stitch Machine	56	• Cap Button Attach Machine	07
• Pattern Sewing Machine	07	• Fusing Machine	10
• Blind Stitch Machine	19	• Pocket Attach Machine	01
• Eyelet Hole Machine	16	• Seam Sealing Machine	08
• A.P.W Machine	08	• Flat Seamer Machine	02
• Button Wrapping Machine	02	• Heat Seal Machine	05
• Flat Lock Machine	10	• Fabric Relax Machine	01
• Feed of the Arm Machine	02	• Automatic & Other Iron Machine	28
• Kansai Machine	16	• Auto & Other Cutting Machine	47
• Button Hole Machine	05	• Other Machines	33

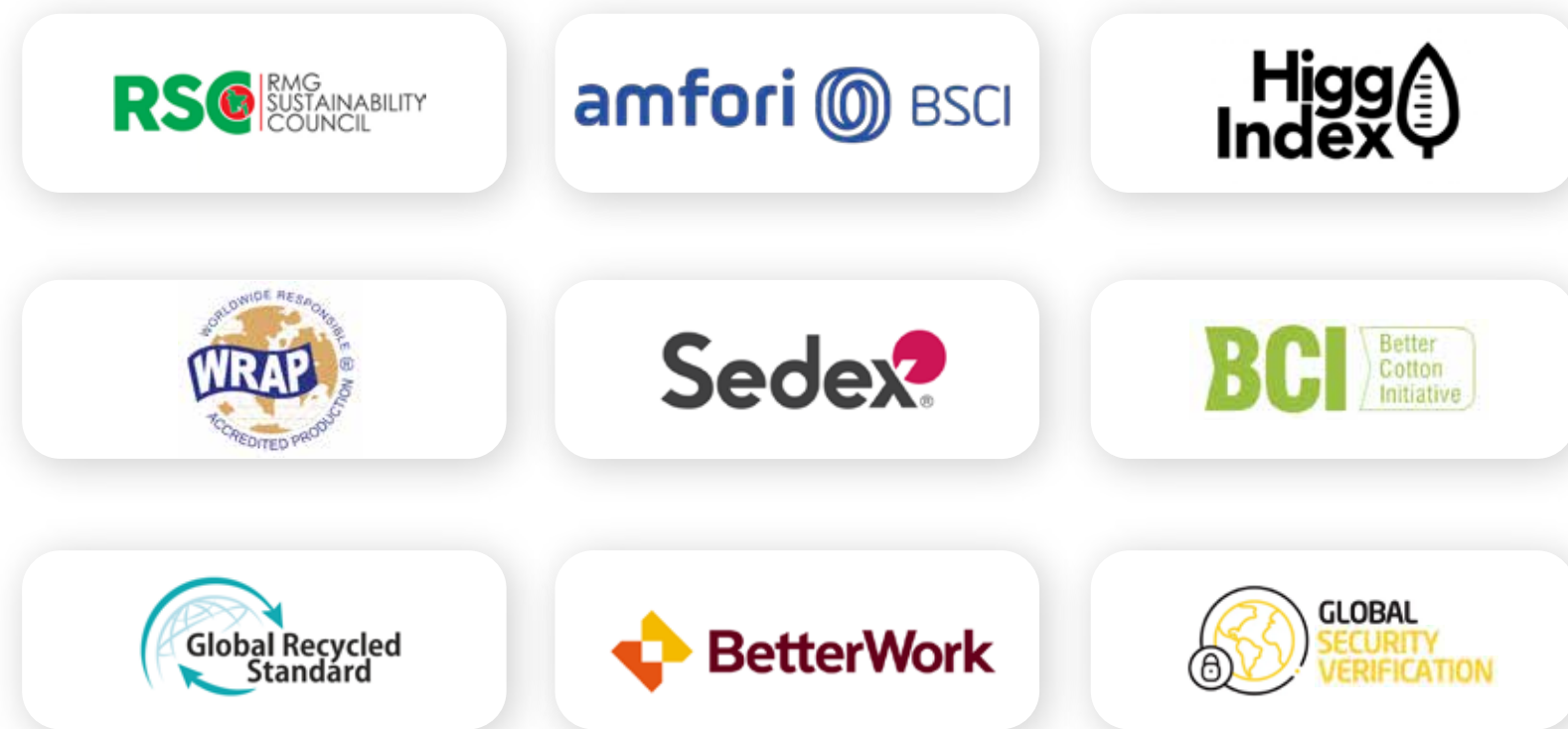
Total

1,764

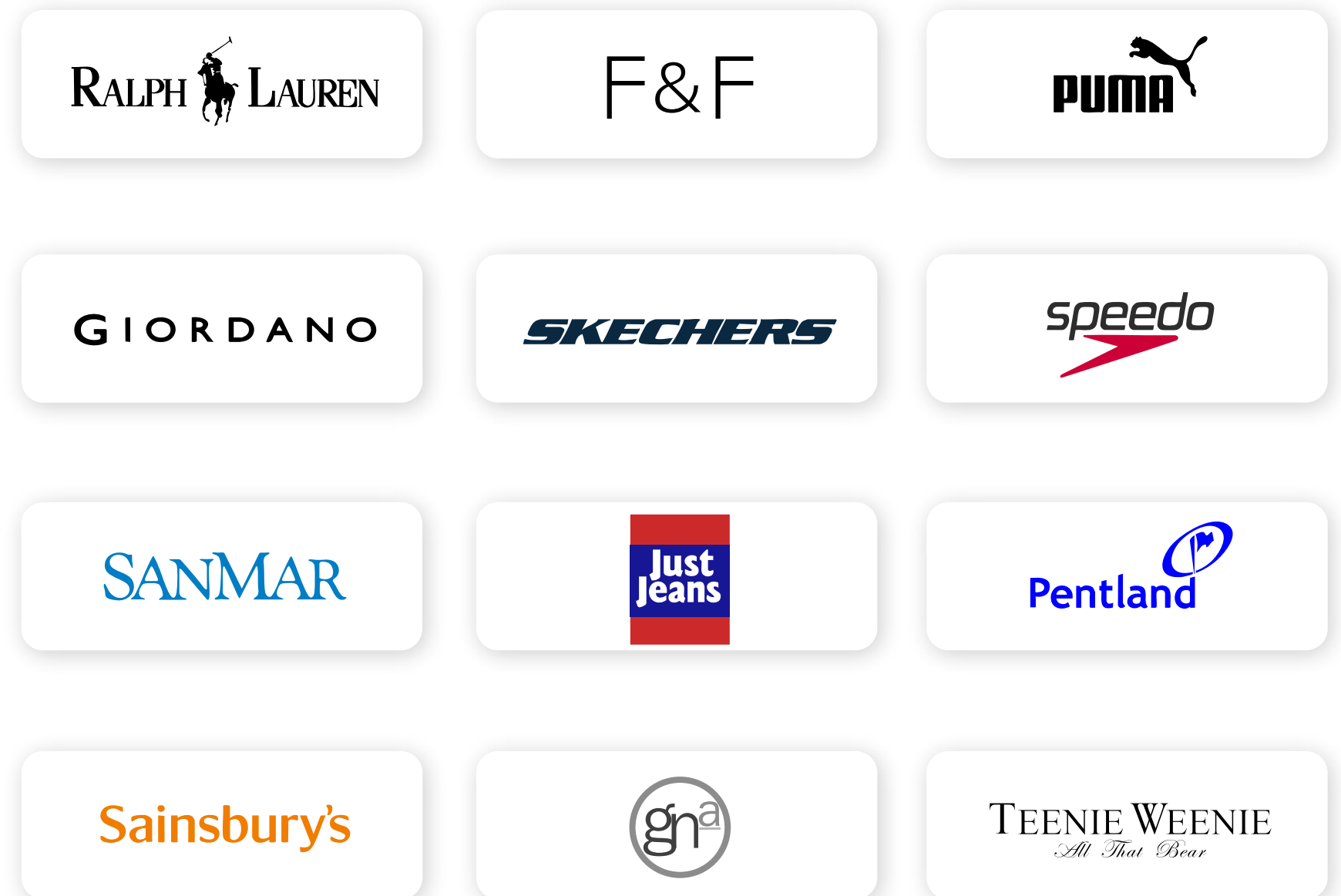
Factory INTERIOR



We are CERTIFIED



Our Valued CUSTOMERS



Product GALLERY – Headwear



Product GALLERY – Outerwear



Product GALLERY – Bottoms



Product GALLERY – Loungewear



Leading Edge TECHNOLOGY



SAP

Our fully integrated SAP system enables real-time visibility across the entire production lifecycle. From order management and raw material sourcing to production planning, inventory control, and shipment tracking; it ensures efficiency and reduces lead times for our global clients.



ETS

We utilize Techzen ETS, a single RFID-based solution that seamlessly connects sewing, finishing, and quality control processes. This technology allows real-time tracking of each garment on the production floor, minimizes bottlenecks, improves line balancing, and ensures higher efficiency.

Auto CAD

In our product development and cutting processes, we implement AutoCAD for pattern making and marker planning. This ensures precision in design execution, optimized fabric utilization and reduced wastage.

3D Pattern & Sample

Our advanced 3D pattern design and virtual sampling technologies allow us to visualize garments digitally before physical production. It significantly reduces sampling time, lowers development costs, enables faster design approvals and accelerates speed-to-market.

Benefits & Facility for **WORKFORCE**

We believe our people are our greatest asset and are committed to fostering a fair, safe, and inclusive workplace. As a responsible employer, we uphold high standards in line with local labor laws and international human rights. We treat everyone with dignity and respect and go beyond fair wages by offering additional employee benefits.

40 +

Monthly training programs

900 +

Learning hour/ month dedicated

2000 +

Employees engaged each month

Training

We conduct comprehensive training programs focused on worker health and safety, sustainability, efficient resource use, emergency preparedness, and reducing water and energy consumption across our facility.



Health & Safety

Full-time on-site medical facility with 2 doctors and 1 medical assistant present

Fully equipped fire control room with fire hydrant and water supply with dedicated pump



Child-Care

On-site childcare facility in a child-proof safe environment including full-time caretaker



Dormitory Facility

On-site residential dormitory facility for staff & workers



We Care About ENVIRONMENT

ETP

We're committed to environmentally responsible production. Our Effluent Treatment Plant (ETP) ensures that all wastewater generated during production is properly treated and discharged in compliance with environmental standards.

Solar Panel

Our solar panel system supports the use of renewable energy, reducing dependence on conventional power sources and lowering overall carbon footprint. It reflects our ongoing commitment to responsible resource management.



Contact Us



Address: Khejurtek, Mirza Nagar,P.O.
Savar Cantonment, UP-Pathalia,
Dhaka, Bangladesh



contact@bettex.com



www.bettex.com