

BETTEX

Your Global Fashion Partner

Lang Lang Fashion(Cambodia) Co., Ltd.





About Us

Lang Lang Fashion (Cambodia) Co., Ltd., established in 2025, is a subsidiary of Yantai Langlang Fashion Co., Ltd. founded in 2014. We are a professional export-oriented sweater manufacturer. Equipped with a skilled production team and advanced facilities, we strictly follow the 5S management rules and complete quality control systems to guarantee high-standard products. As a flexible overseas production base for global clients, we always stick to consistent premium quality and offer trustworthy cooperation.

朗朗时尚（柬埔寨）有限公司成立于 2025 年，是 2014 年成立的烟台朗朗时尚有限公司旗下全资子公司。我们是专业外向型毛衣生产企业，拥有成熟生产团队与先进生产设备，严格执行 5S 管理体系及完善的品控标准，确保产品高品质输出。作为服务全球客户的柔性海外生产基地，公司始终坚守统一品质要求，为海内外客户提供稳定可靠的合作保障。

Overview

Year Of Establishment	2025
Employees	550
Total Area	16,000 m ²
Machines	1180+
Production Capacity	5,000,000 / year
Product Category	3GG, 5GG, 7GG, 12GG, 14GG
Export Market	Europe, USA, Canada, Australia, Japan

- We believe in the power of Sincerity.

我们坚信“真诚”的力量；

- We regard Reputation as our life.

我们视“信誉”为生命；

- We are passionate about Quality.

我们对追求“质量”充满热情；

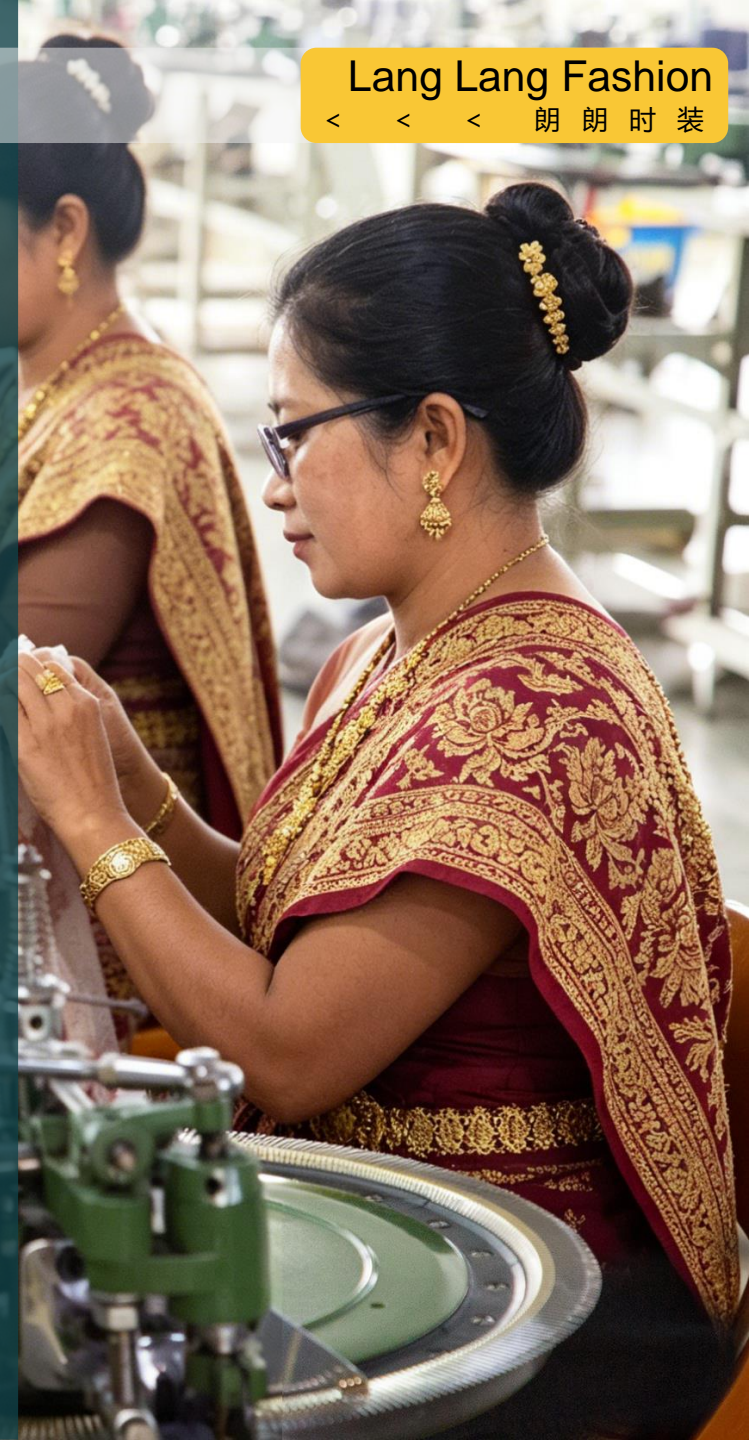
- We believe in and act upon ESG standard.

我们信奉并践行“ESG”标准。



List of Machines

Name	Quantity(In Cambodia)
Automatic Knitting Machine 全自动电脑横机	260
Linking Machine 缝合机	800
Washing Drum 全自动洗衣机	3
Tumble Dryer 烘干机	6
Sewing Machine 缝纫机	36
Buttoning (lockstitch) 钉扣机	4
Lockstitch Button Holders 锁眼机	4
High Speed Fitting Machine 高速合身机	16
Water Treatment Equipment 水处理设备	2
Ironing Table 蒸汽熨台	42
Steam Boiler 蒸汽锅炉	2
Auto Metal Detection 自动检针机	3





Capacity / Year
年产能

5,000,000



Plant Size
工厂规模

16,000 m²

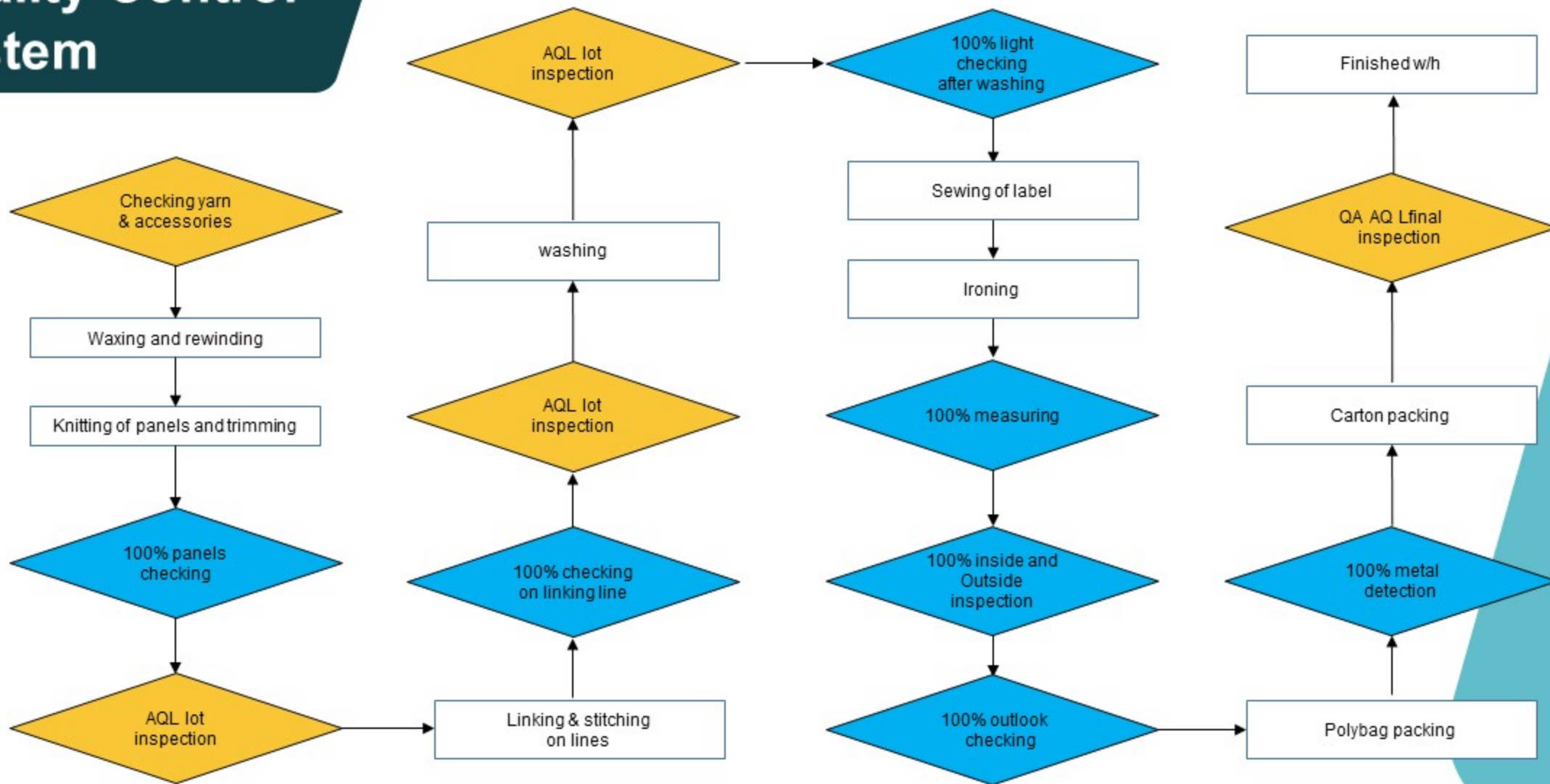


Workforce
生产人员

550



Quality Control System



Our Customers

ZARA

MANGO

PRIMARK®

Walmart*

NEXT

Sainsbury's

MATALAN

STRADIVARIUS

Massimo Dutti

TESCO

M&S
EST. 1884

JACK&JONES

H&M

C&A

OYSHO

Kmart

RESERVED

PULL&BEAR

JCPenney

ASDA

Product – Ladies'



Product – Mens'



Product – Kids'



Contact Us



House/Building No.s, Street Road No. 8. Mi Leav, Tuol Ampil, Basedth, Kampong Speu, Cambodia

柬埔寨：磅士卑省Basedth Tuol Ampil Mi Leav街8号s栋