

BETTEX

YOUR GLOBAL FASHION PARTNER



BETTEX INDUSTRIES LTD.

FACTORY PROFILE



We are BETTEX INDUSTRIES LTD.

BETTEX Industries Ltd. offers a wide variety of products & innovative solutions to our clients around the world. Each month we create hundreds of thousands garment pieces with passion.

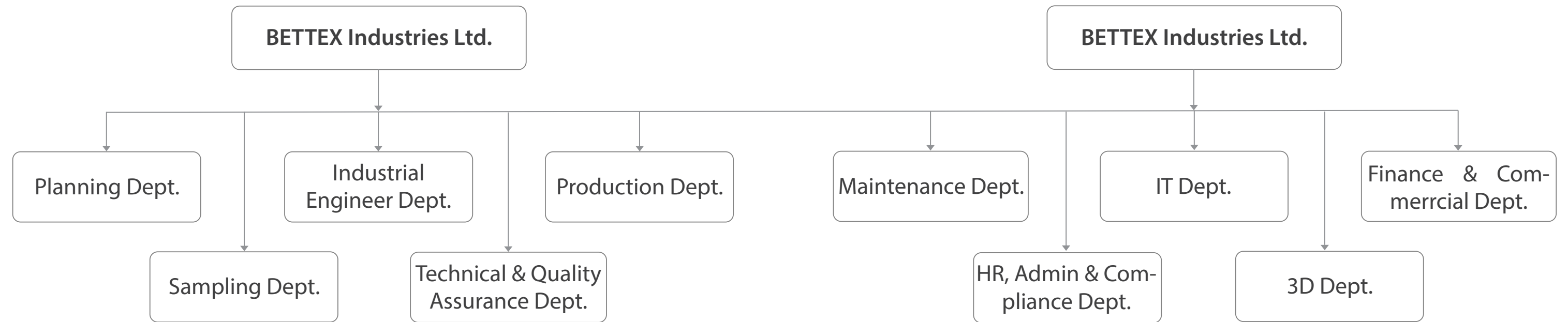
We are a pioneer in the textile manufacturing industry with our advanced flat knits, cut & sewn production system. The dynamic and innovative talents from Bangladesh, China & India work dedicatedly to cater to our local and international clients. With high service level and quality assurance from a sustainable perspective, we produce a wide range of garments at our Factory in Gazipur, Bangladesh.



Overview

Employees	1,200 +
Total Area	1,22,500 ft ²
Machines	1,100 +
Monthly knitting production capacity (in pcs)	3,50,000 +
Global brands & retailers served	26 +
Export market	Europe, USA, Canada, UK, Mexico, Japan, Philippines & Middle East
Audited by	RSC, amfori, Oeko-Tex, Textile Exchange, SMETA

ORGANOGRAM



Embrace challenges and lead through adversity



Remarkable SERVICES

R & D

We provide R&D services to assist our customers in design and developing new products, as well as enhance existing ones. This include conducting market research and test new designs to refine new products.

Threadify (e-commerce)

Recognizing the need of a strong online presence, we launched our ecommerce platform – Threadify. It's a "One Stop Fashion Solution" that bring local & foreign suppliers together and connect manufacturers with a world of fashion buyers. The platform offers a global selection of yarn, fabric and trims, with flexible order quantity and worldwide shipping.

Remarkable SERVICES

Cont'd

Design Support

Our in-house designers have deep expertise in crafting tailored solutions for our global clientele. We operate in a global design-led ecosystem, ensuring delivery of customized solutions that meet diverse client needs.

Showroom

Browse through our diverse product range in the cozy showroom located inside the premises; to get the hand-feel, color consistency, quality check and overall appearance of the garments.



Committed to delivering exceptional customer service, quality craftsmanship and delivering seamless support for all your needs.



List of MACHINES



- 12 gauge knitting machine – 515 Sets
- Multi gauge knitting machine – 100 Sets
- Total Auto Knitting Machine – 615 Sets**
- 14 Gauge Linking Machine – 400 Sets
- 8 Gauge Linking Machine – 75 Sets
- Total Linking Machine – 475 Sets**
- Washing Machine – 04 Sets
- Dryer Machine – 03 Sets



Our Valued BUYERS

C&A

INDITEX

LPP

AUTHENTIC STYLE

SeRGENT Major

Marubeni

Auchan|RETAIL

TALLY WEIJL

LIDL

Sainsbury's

MATALAN

RENNER

CUC

RELIANCE

GOURAND

FAST TRACK CLOTHING CO. EST.2020

RiverIsland

TEDDY GROUP

UNITED LABELS

KIABI

Stuncroft

ADITYA BIRLA

WoolOvers

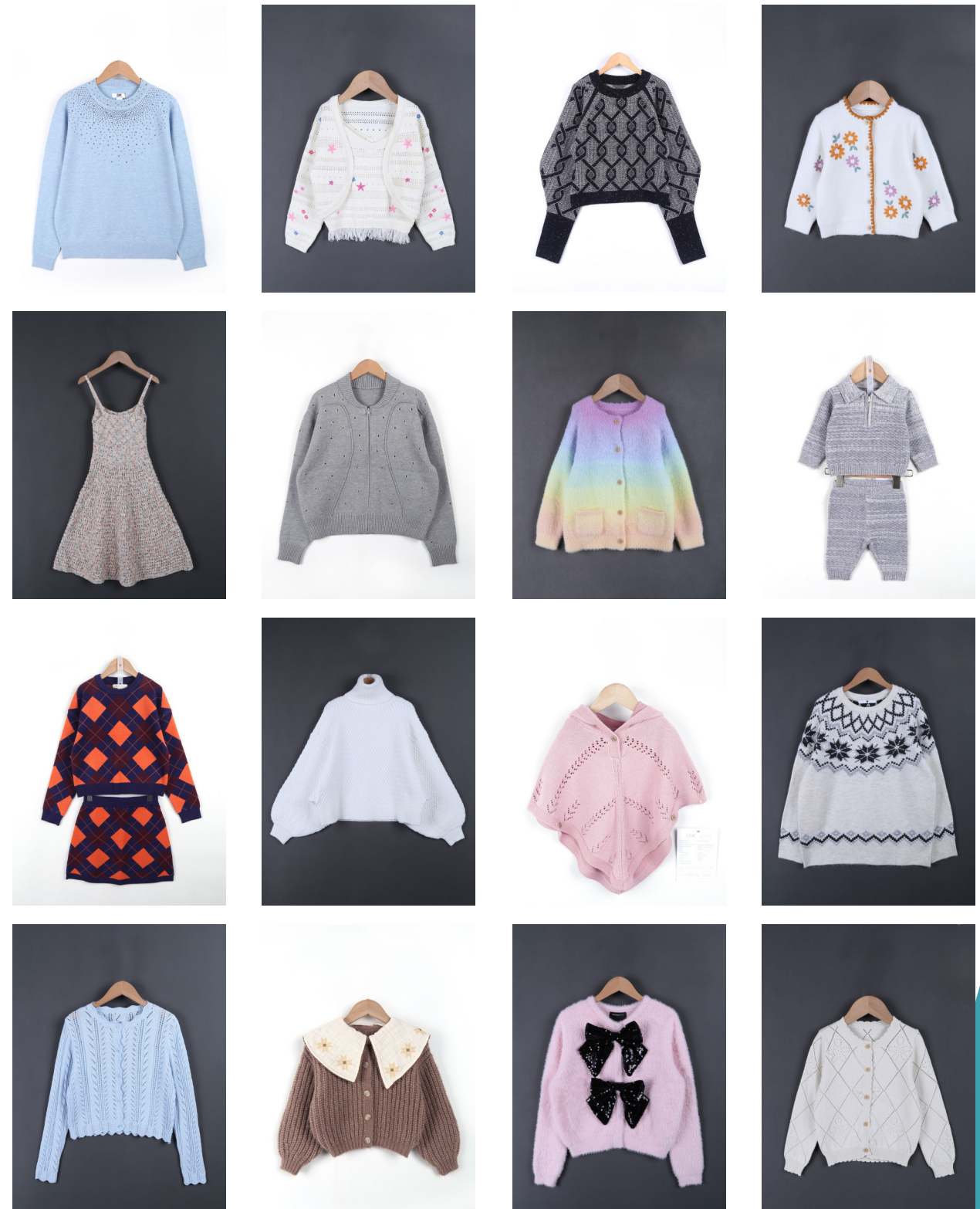
UNITED ESSENTIALS

Product GALLERY



Product GALLERY

Cont'd



Uncompromisable QUALITY

Quality controls are continuously conducted internally which gives us full control of everything from materials to patterns and sewing. We follow an acceptable quality level (AQL) of level 2 1.5 (internal). Our trained inspectors oversee that we always live up to the standard we set out to deliver.

Our aim is to offer a secure production from start to finish with Quality Management System (QMS) by 2025. It's aligned with our purpose and strategic direction (ISO 9001:2015).



We uphold rigorous quality control measures throughout the manufacturing processes to ensure that every product meets stringent criteria.



Quality Management System (QMS)

Design & Build

Identify top defects through root cause analysis

Deploy

Preventative action plan, training and evaluation of workers

Control & Measure

Set section wise goals and KPI on operator & inspector level

Review & Improve

Monthly progress tracking then repeat with new defects

Leading-edge TECHNOLOGY

ERP SYSTEM

We use state-of-the-art ERP system for streamlined production, quality control, inventory management and real-time order tracking, allowing buyers to monitor their order. By 2025, the system will be fully integrated across all operations.

3D MOCKUP

Elevate your apparel design with 3D mockup of garments that we offer through our ecommerce platform – [Threadify](#)

360-DEGREE VIRTUAL TOUR



Step inside our factory virtually, from anywhere in the world. We offer you an immersive experience of

exploring every corner of our factory virtually in 360 degree. Start the tour by simply scanning the QR code.



Fostering a vibrant WORKFORCE



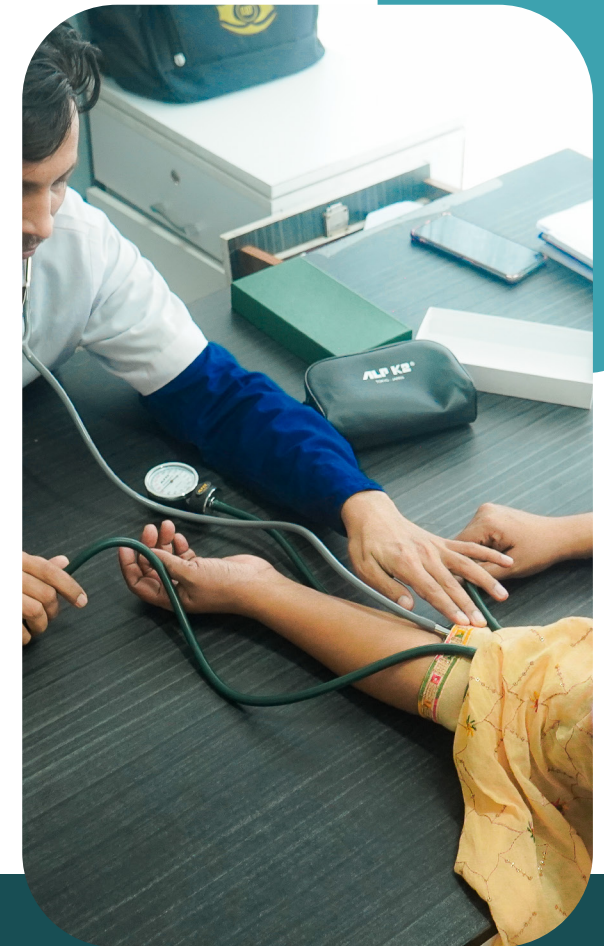
OUR PEOPLE ARE OUR MOST
VALUABLE ASSET

Our goal is to create a working environment that promotes a fair, safe, inclusive and diverse workplace culture for each of our employees. As a responsible & ethical employer, BETTEX Industries Ltd. strives to maintain the highest standards of compliance with local labor legislations and international human right standards.

Fostering a vibrant WORKFORCE

Cont'd

We believe in the strength of diversity and inclusivity, and we are proud to have a team that reflect those beliefs. We promote an environment in which everyone is treated with dignity and respect. On top of ensuring fair wage, we also provide our staff with additional benefits to support their mental and physical wellbeing.



Health & Safety

Free medical camp, onsite medical support, and health insurance



Motivation & Incentive

Production & attendance bonus, best employee award



Building a Sense of Synergy

Annual sports day

We care about ENVIRONMENT



Sustainability lies at the heart of our operations. We strive to ensure that economic growth is not accomplished at the cost of the world that we all share. With a focus on promoting sustainable fashion, we undertake several initiatives.

We care about ENVIRONMENT

Cont'd

Water Wastage Reduction

We prioritize responsible water management by reducing garments re-wash and using proper chemicals to ensure less water wastage. There's also a plan to install more eco-friendly washer and dryers that'll significantly reduce the water consumption.

ETP

Our advanced effluent and sewage treatment plant ensures complete purification of wastewater before discharge, effectively removing harmful pollutants from our manufacturing processes.



OUR FUTURE PLANS

Solar Panel

We plan to invest in solar panel system to generate clean and renewable energy. These solar panels will not only help us reduce our dependence on conventional energy sources but also minimize our environmental impact by lowering greenhouse gas emissions.

Rainwater Harvesting

Our state-of-the-art rainwater harvesting program is set to be implemented by the year 2025.



Growing TOGETHER

25 +

Monthly Training Programmes

600 +

Learning hour/ month dedicated

1000 +

Employees engaged each month

We initiate extensive and comprehensive training sessions encompassing workers health and safety issues, sustainable practices, efficient resource utilization, emergency management and minimizing water & energy wastage throughout the manufacturing facility.

Regular training sessions are conducted for managers and employees aimed at enhancing trust in the process and ensuring fairness and transparency.



We are CERTIFIED



BETTEX

YOUR GLOBAL
FASHION PARTNER

Contact Us

EMAIL: contact@bhml-bettex.com.bd

WEBSITE: www.bettex.com

CLICK HERE FOR VIRTUAL TOUR:
www.bettex.com.bd/bettex-industries-360

ADDRESS: Kamarjuri, Natun
Bazar, National University,
Gazipur-1704, Dhaka,
Bangladesh